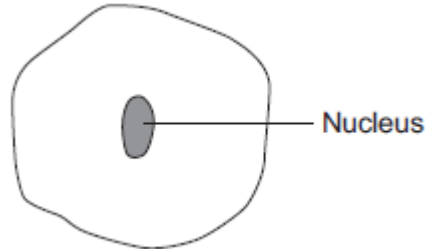


CLASSIFICATION OF LIVING ORGANISMS

Q1.

The diagram below shows a cell.



(a) Draw a ring around the correct answer to complete each sentence.

(i) In the nucleus of a cell, genes are part of

- chromosomes.
- membranes.
- receptors.

(1)

(ii) Different genes control different

- characteristics
- gametes
- nuclei

of an organism.

(1)

(iii) Studying the similarities and differences between organisms allows us to

- classify
- clone
- grow

the organisms.

(1)

(b) Complete the following sentence.

Living things can be grouped into animals, microorganisms and _____ .

(1)

(Total 4 marks)

